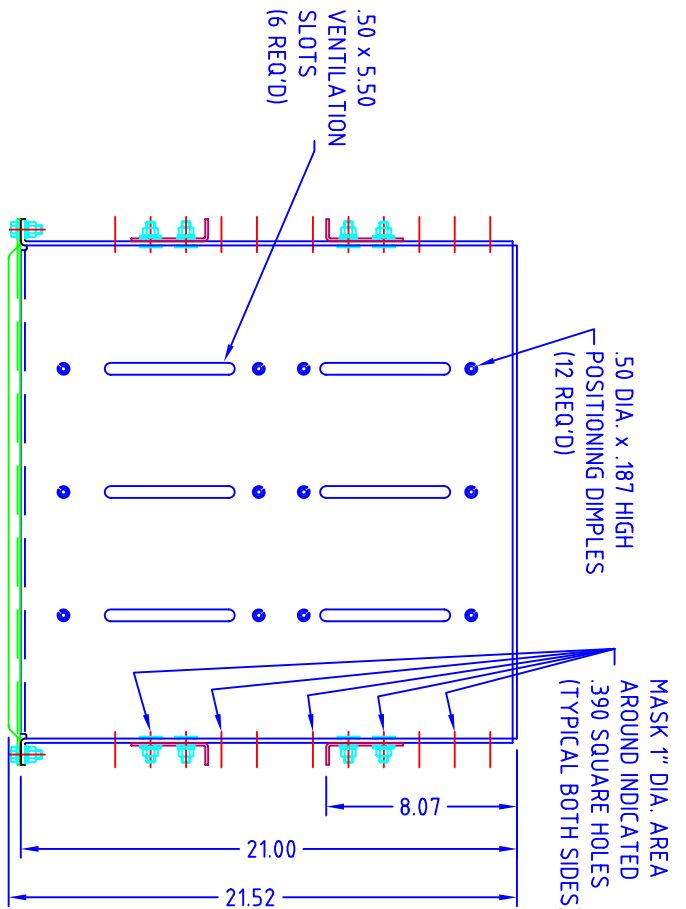
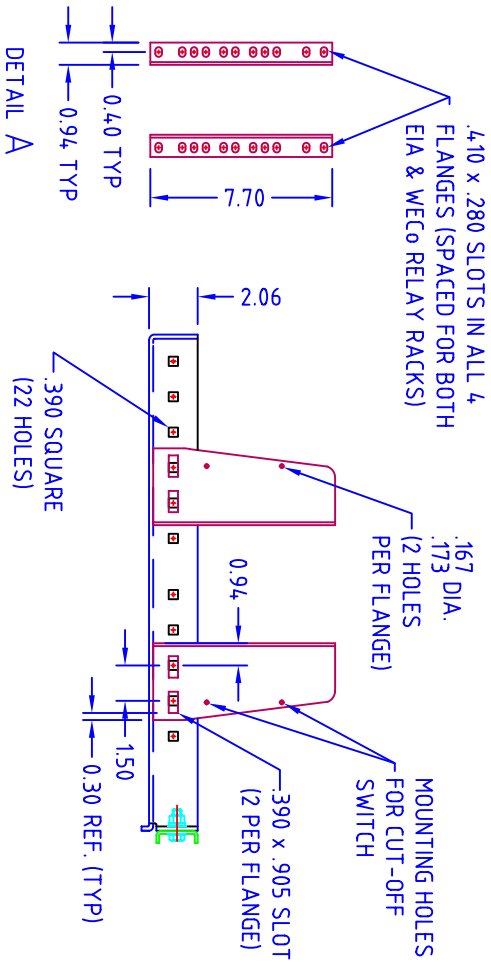


- NOTES:
1. MATERIAL: TRAY: 7 GA. SHEET STEEL  
HOLD-DOWN AND BRACKETS: 11 GA SHEET STEEL  
FINISH: EPOXY POWDER COAT ASA61 GREY
  2. WELD AND GRIND REAR CORNERS.
  3. MANUFACTURER SHALL SUPPLY THE FOLLOWING YELLOW ZINC CHROMATE HARDWARE (1 PACKAGE PER TRAY):

QTY	DESCRIPTION
8	3/8-16x1.00 LONG ELEVATOR BOLTS
2	3/8-16x1.00 LONG HEX HEAD BOLTS
10	3/8-16 NUTS
8	3/8 FLAT WASHERS
8	3/8 LOCK WASHERS
4	3/8 GRINDING WASHERS
16	12-24x1/2 THREAD FORMING SCREWS



DATE	REV	DESCRIPTION
01/10/05	6	SQUARE HOLES ADDED
02/09/04	5	CTR. CHAN. REMOVED. TRAY MODIFIED TO 7 GA
10-05-03	4	CENTER CHANNEL AND DIMENSIONS ADDED
10-03-02	3	CHANGED WIDTH DIM. OF SLOTS IN FLANGES FROM .780 TO .905 (FOR 3" WIDE RACKS)
10-31-01	2	ADDED 16 THD FRM SCREWS TO NOTE 3
08-26-99	1	MOVED .167-.173 DIA. HOLES BY .185.

DATE		02/10/04	DRAWING NUMBER		FR3100A	REV		6
SCALE			DRAWN BY		F. DRISCOLL	APPROVED BY		
TITLE		RACK ASSEMBLY - TRAY FOR 23" RELAY RACK						
DATE		02/10/04	DRAWING NUMBER		FR3100A	REV		6

CONFIDENTIAL/PROPRIETARY INFORMATION  
STANDBY GPU

FLAMM